

# REICHENBACHIA

Staatliches Museum für Tierkunde Dresden

Band 33

Ausgegeben: 30. März 2000

Nr. 33

## Three new species of *Lyssomanes* HENTZ, 1845 from Peru (Arachnida: Araneae: Salticidae)

With 9 figures

DMITRI V. LOGUNOV

**Abstract.** Three new species of *Lyssomanes* are described from Peru: *L. euriensis* sp. n., *L. lehtineni* sp. n. and *L. peruensis* sp. n. A new faunistic record of *L. unicolor* (TACZANOWSKI, 1872) in Peru is provided as well.

### Introduction

According to PRÓSZYŃSKI'S (1990) catalogue of the Salticidae, the genus *Lyssomanes* has so far been known to comprise 69 valid species. All these species were carefully (re)described by GALIANO (1962, 1980, 1984), with the only additional species being later described by BRIGNOLI (1984). The aim of the present paper is to describe three new *Lyssomanes* species collected by the Finnish Peru expeditions in 1982–1983.

All the types of new species described in this paper are deposited in the Zoological Museum of the Turku University (ZMTU), Turku, Finland. Abbreviations used in the text: ALE – anterior lateral eye, AME – anterior median eye, ap – apical, d – dorsal, Fm – femur, Mt – metatarsus, pr – prolateral, Pt – patella, PLE – posterior lateral eye, PME – posterior median eye, rt – retro-lateral, Tb – tibia, Tr – tarsus, v – ventral. For the leg spination the system adopted is that used by ONO (1989). The sequence of leg segments in measurement data is as follows: femur + patella + tibia + metatarsus + tarsus. All measurements are in mm.

### Survey of species

#### *Lyssomanes euriensis* sp. n. (Figs. 3–5)

**Material.** Holotype female (ZMTU), Peru, IX–XI.1982 (no precise locality, no name of collector). Paratype: 1 female (ZMTU), Peru, Madre de Dios, Tambopata Distr., Euri, path to the Cocha, hand-picking, 20.X.1982, leg. J. SUOMELA & L. PIETILÄ.

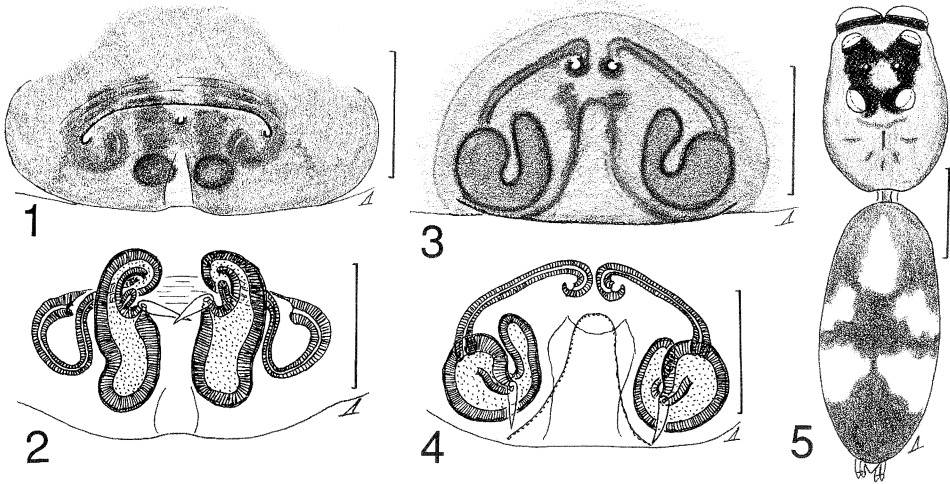
**Etymology.** The species epithet refers to the locality of the paratype, Euri.

**Diagnosis.** According to the body coloration (Fig. 5) and the peculiar structure of the genitalia (Figs. 3, 4), the new species is most closely related to *Lyssomanes longipes* (TACZANOWSKI,

---

Author's address:

Dr. Dmitri V. Logunov, Siberian Zoological Museum, Institute for Systematics and Ecology of Animals, Frunze ul. 11, Novosibirsk 630091, Russia. E-mail: dpavuk@online.nsk.su



Figs 1–5: Female copulatory organs of *Lyssomanes lehtineni* sp. n. (1–2, female holotype) and *Lyssomanes euriensis* sp. n. (3–5, the genitalia of the paratype and the general appearance of the holotype): 1, 3 – epigyne, ventral view; 2, 4 – spermathecae, dorsal view; 5 – female body coloration, dorsal view. Scale lines: 0.2 mm (1–4), 1 mm (5).

1872) (see GALIANO 1980: Figs. 1–7), but is well distinguishable from it in having of the much wider separated receptacles and the well-developed, deep epigynal pocket (Fig. 4).

**Distribution.** The type locality only.

**Description.** Female (holotype). Carapace 2.08 long, 1.35 wide, 0.93 high at PLE. Ocular area 1.15 long. Distances between eyes: AME-AME 1.00, ALE-ALE 0.93, PME-PME 0.30, PLE-PLE 0.60. Diameter of AME 0.49. Abdomen 2.88 long, 1.40 wide. Cheliceral length 0.90. Clypeal height 0.08. Length of leg segments: I 2.88+0.83+2.63+2.75+0.75; II 2.33+0.68+1.60+2.05+0.60; III 2.05+0.55+1.90+2.28+0.73; IV 2.23+0.53+2.03+2.95+0.60. Leg spination: I: d 1-1-1, pr 0-1, v 0-2-2-0; Pt d 1ap; Tb v 5 pairs; Mt v 6 pairs. II: Fm d 1-1-1, v 0-2-2-0; Pt d 1ap; Tb v 5 pairs; Mt v 5 pairs. III and IV: Fm d 1-1-1; Pt d 1ap; Tb and Mt without spides. Coloration in alcohol. Carapace yellow, tinged with brown. Black around eyes (Fig. 5). Abdomen: dorsum with grey-brown color-markings as I Fig. 5; venter yellow. Book-lung covers and spinnerets yellow. All legs and palpi yellow. Epigyne and spermathecae as in Figs. 3, 4.

***Lyssomanes lehtineni* sp. n.** (Figs. 1, 2)

**Material.** Female holotype (ZMTU), Peru, Loreto, Iquitos Distr., Rio Nanay, Playa Santa Rita, litter of inundation forest, 14.VIII.1983, leg. P. T. LEHTINEN.

**Etymology.** The species is named in honour of the famous Finnish arachnologist, Dr. Pekka T. LEHTINEN, the collector of this species.

**Diagnosis.** According to the genitalic structure, i.e. the epigynal plate having a transverse fold ended in both sides by the copulatory openings (Fig. 1), the new species is most close to *Lyssomanes jucari* GALIANO, 1984, *L. santarem* GALIANO, 1984 and *L. taczanowskii* GALIANO, 1980 (see GALIANO 1980: Figs. 41, 45; 1984: Figs. 27–28, 33–34), but is well distinguishable

from all them by the larger and elongated (not rounded) receptacles and the longest and thinnest insemination ducts (Fig. 2).

**Distribution.** The type locality only.

**Description.** Female (holotype). Carapace 2.75 long, 1.93 wide, 1.50 high at PLE. Ocular area 1.50 long. Distances between eyes: AME-AME 1.23, ALE-ALE 1.28, PME-PME 0.68, PLE-PLE 0.95. Diameter of AME 0.63. Abdomen 4.50 long, 2.13 wide. Cheliceral length 1.00. Clypeal height 0.25. Length of leg segments: I 3.38+1.20+3.15+3.00+0.73; II 3.10+1.10+2.78+2.83+0.73; III 2.73+0.83+2.58+3.08+0.78; IV 2.98+0.78+2.70+3.48+0.75. Leg spination: I: d 1-1-1, pr and rt 0-0-1-1; Pt d 1ap; Tb d, pr and rt 0-1, v 4 pairs; Mt pr and rt 1-0, v 4 pairs. II: Fm d 0-1-1-1, pr and rt 0-0-1-1; Pt d 1ap; Tb d 1-1, pr and rt 0-1, v 4 pairs; Mt pr and rt 1-0, v 3 pairs. III: Fm d 0-1-1-1, pr and rt 0-0-1-1; Pt d 1ap; Tb d 1-1, pr and rt 1-1, v 0-2; Mt pr and rt 1-1-1, v 2-0. IV: Fm d 0-1-1-1, pr and rt 0-0-1-1; Pt d 1ap; Tb d 1-1, pr and rt 1-1, v 0-2; Mt pr and rt 1-1-1, v 2-0. Coloration in alcohol. All the body, including all legs and palpi, yellow. Black around eyes, except for AME (yellow). Epigyne and spermathecae as in Figs. 1, 2.

***Lyssomanes peruensis* sp. n.** (Figs. 6–9)

**Material.** Holotype male (ZMTU, partly damaged, with the only right palp), Peru, Madre de Dios, 7.X-25.XI.1982, (collector unknown).

**Etymology.** The species epithet refers to the type locality.

**Diagnosis.** The new species is very closely related to *Lyssomanes yacui* GALIANO, 1984 and *L. temperatus* GALIANO, 1980 (see GALIANO 1980: Figs. 141–144; 1984: Figs. 20–23, 29–30), but can be distinguished by the visibly longer and bent embolus (Figs. 7, 8) and the swollen tegulum as seen from lateral view (Fig. 6).

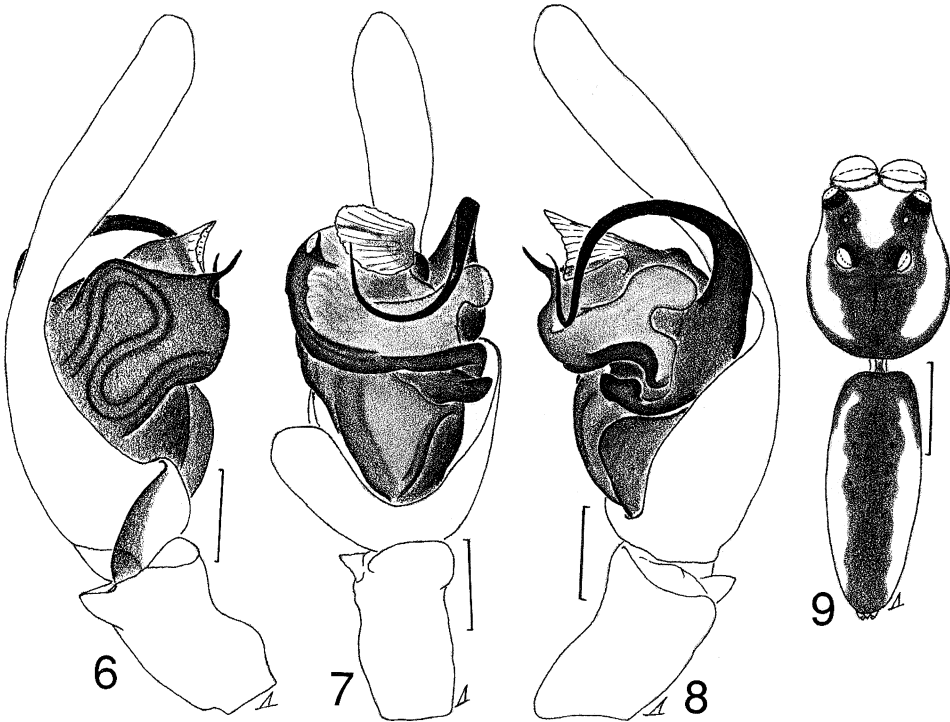
**Distribution.** The type locality only.

**Description.** Male (holotype). Carapace 2.25 long, 1.65 wide, 1.28 high at PLE. Ocular area 1.28 long. Distances between eyes: AME-AME 1.08, ALE-ALE 1.25, PME-PME 0.78, PLE-PLE 0.88. Diameter of AME 0.53. Abdomen 2.90 long, 1.00 wide. Cheliceral length 0.80. Clypeal height 0.25. Length of leg segments: I 2.40+0.88 (Tb, Mt and Tr absent); II 2.18+0.78+2.03+2.03+0.65; III 2.25+0.70+1.88+2.15+0.70; leg IV absent. Leg spination: I: Fm d 1-1-1, pr and rt 0-1-1; Pt d 1ap; Tb, Mt and Tr absent. II: Fm d 1-1-1, pr and rt 0-1-1; Pt d 1ap; Tb d 1-1, pr and rt 1-1, v 2-0-2-2; Mt pr and rt 1-0, v 2-2-2. III: Fm d 1-1-1, pr and rt 0-1-1; Pt d 1ap; Tb d 0-1, pr and rt 1-1, v 0-2; Mt pr and rt 1-0, v 2-2-2. Leg IV absent. Coloration in alcohol: Carapace yellow, with a brown longitudinal median band and brown margins (Fig. 9). Black around eyes, except for AME (yellow). Abdomen: dorsum yellow with brown color-markings as in Fig. 9; venter yellow. Spinnerets and book-lung covers yellow. All legs completely yellow. Palpal structure as in Figs. 6–8.

***Lyssomanes unicolor*** (TACZANOWSKI, 1872)

**Material.** One male (ZMTU), Peru, Madre de Dios, Tambopala Distr., Puerto Maldonado, 16.X.1982, leg. J. SALO, J. PUONTI, J. SUOMELA & T. VUORISALO.

**Notes.** This is a rather common Neotropical species so far reported from Mexico, Brazil, Guyana, Panama and Peru (PRÓSZYNSKI, 1990). For its redescription and diagnostic figures see GALIANO (1962: Figs. 1–3, 1980: Figs. 90–91).



Figs. 6–9: Male copulatory organs and general appearance of *Lyssomanes peruensis* sp. n.:  
 6 – male palp, lateral view; 7 – ditto, ventral view; 8 – ditto, median view;  
 9 – male body coloration. Scale lines: 0.2 mm (6–8), 1 mm (9).

#### Acknowledgements

I wish to express my warmest thanks to Dr. P. T. LEHTINEN (Turku, Finland), who provided me with the access to the salticid collections made by the Finnish Peru expeditions, as well as to Drs. S. KOPONEN and M. SAARISTO (Turku, Finland) for their hospitality during my stay at Turku in September–October, 1998.

#### References

- BRIGNOLI, P. M. (1984): On some West Indian *Mimetus* and *Lyssomanes* (Araneae: Mimetidae, Salticidae). – Bull. Br. arachnol. Soc. **6** (5): 200–204.
- GALIANO, M. E. (1962): Redescripción de especies del género *Lyssomanes* Hentz, 1845 basadas en los ejemplares típicos. – Acta Zool. Lilloana **18**: 45–97.
- GALIANO, M. E. (1980): Revisión del género *Lyssomanes* Hentz, 1845 (Araneae, Salticidae). – Op. Lilloana **30**: 1–104.
- GALIANO, M. E. (1984): New species of *Lyssomanes* Hentz, 1845 (Araneae, Salticidae). – Bull. Br. arachnol. Soc. **6** (6): 268–276.
- ONO, H. (1989): A revisional study of the spider family Thomisidae (Arachnida, Araneae) of Japan. 252 pp. National Science Museum, Tokyo.
- PRÓSZYŃSKI, J. (1990): Catalogue of Salticidae (Araneae): Synthesis of quotations in the world literature since 1940, with basic taxonomic data since 1758. 336 pp. Rozprawa Naukowa, WSRP, Siedlce.